

CONTRAST

The official newsletter of



With over 30 years of imaging services experience, Imaging Healthcare Specialists has earned an outstanding reputation for providing the highest quality medical imaging technology, highly specialized expertise, and exceptional customer service to physicians and patients in San Diego and the surrounding communities.

CT LOW-DOSE LUNG CANCER SCREENING

IHS is pleased to offer Low Dose Lung CT screening tests for your at-risk patients.

Which of my patients are eligible?

Eligibility varies by payer, but high-risk patients are:

- 50-80 years of age
- 20+ pack years or greater of tobacco smoking (cigar and non-cigarette smokers are not eligible)
- Current smokers or quit smoking within the last 15 years

Why? – 30,000+ preventable deaths

The main benefit of lung cancer screening is preventing death from lung cancer. Lung cancer screening finds over half of lung cancer at an early stage when it is more curable, compared to only about 25% without screening.³

Lung cancer screening scan for those at high risk can reduce the lung cancer death rate by up to 20%. Nationally, only 5.8% of those at high risk were screened. Massachusetts has the highest screening rate at 16.3%, while California has the lowest at 1.0%

Nationally, only 25.8% of cases are diagnosed at an early stage when the five-year survival rate is much higher (61%). Unfortunately, 44% of cases are not caught until a late stage when the survival rate is only 7%. Early diagnosis rates were best in Massachusetts (31.9%), and worst in Hawaii (19.5%).

³ Silvestri, Gerard A., et al. "Outcomes from More than 1 Million People Screened for Lung Cancer with Low-Dose CT Imaging." Chest, 2023, <https://doi.org/10.1016/j.chest.2023.02.003>.

IN THIS ISSUE

CT LOW-DOSE LUNG CANCER SCREENING

BREAST IMAGING UPDATE

MRI EXTREMITY ORDERING WITH AND WITHOUT CONTRAST

DID YOU KNOW?

A LOW DOSE LUNG CT SCREENING CARRIES AN OVERALL AVERAGE EFFECTIVE DOSE OF APPROXIMATELY 2 MSV AS COMPARED WITH AN AVERAGE EFFECTIVE DOSE OF 7 MSV FOR A TYPICAL STANDARD-DOSE CHEST CT EXAMINATION.

Source: Larke et al. 2011 Estimated Radiation Dose Associated With Low-Dose Chest CT of Average-Size Participants in the National Lung Screening Trial.



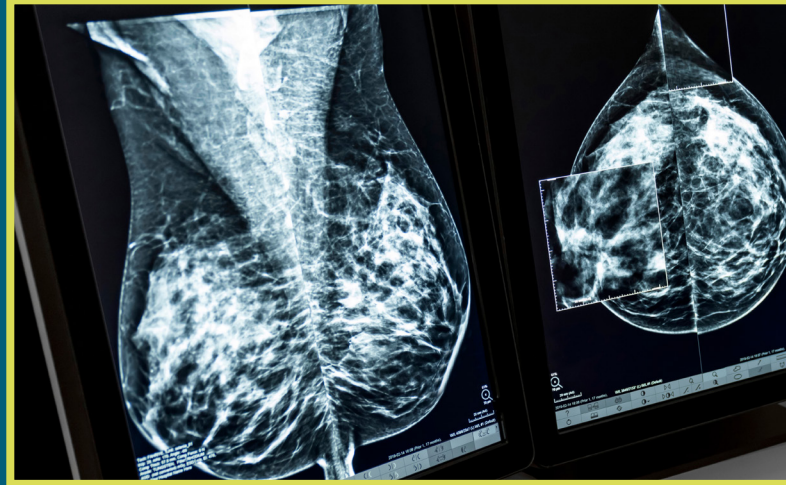
QUESTIONS?

Visit our website imaginghealthcare.com or email us info@imaginghealthcare.com, today for more information

BREAST IMAGING UPDATE

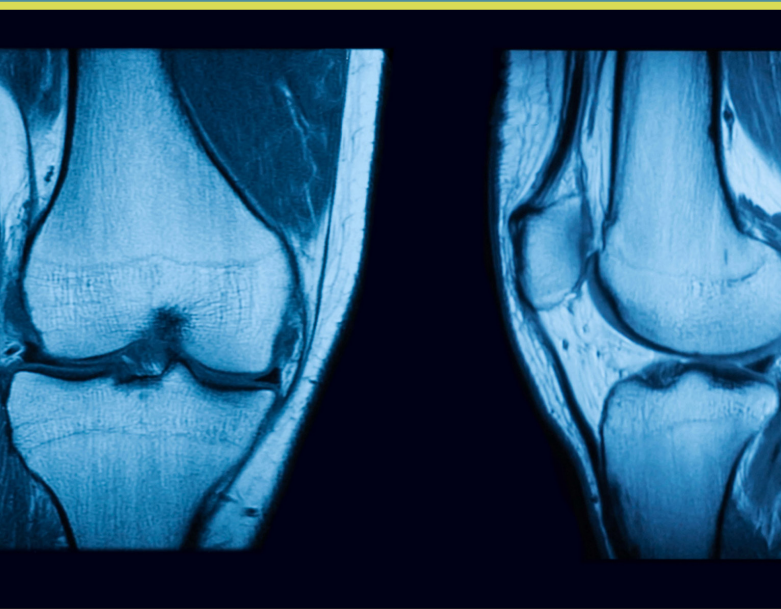
To ensure we provide quality care to our breast imaging patients, we are requiring that we have three years of prior breast imaging before scheduling a mammogram, breast ultrasound, or breast MRI. This will ensure that our radiologists aren't delayed in reading the imaging report and will have all the important image comparisons.

IF YOU HAVE ANY QUESTIONS OR CONCERNS REGARDING THIS CHANGE, PLEASE CONTACT US AT INFO@IMAGINGHEALTHCARE.COM



ORDERING INSTRUCTIONS FOR MRI EXTREMITY WITH AND WITHOUT CONTRAST

We have seen an increase of MRI orders for with and without contrast for extremity pain, which isn't the suitable exam for extremity pain. If the **MRI is for pain**, then the appropriate MRI to order is **without contrast**. While ordering an **MRI with contrast is appropriate when there is a concern of tumor staging, infection, or osteomyelitis**. Please see the ordering guide for reference.



UPPER EXTREMITY (JOINT)

- Without Contrast (73221)
- Without and With IV Contrast (73223) (IV Contrast Indications: Tumor Staging, Infection, Osteomyelitis)

LOWER EXTREMITY (JOINT)

- Without Contrast (73721)
- Without and With IV Contrast (73723) (IV Contrast Indications: Tumor Staging, Infection, Osteomyelitis)

UPPER EXTREMITY (NON-JOINT)

- Without Contrast (73218)
- Without and With IV Contrast (73220) (IV Contrast Indications: Tumor Staging, Infection, Osteomyelitis)

LOWER EXTREMITY (NON-JOINT)

- Without Contrast (73718)
- Without and With IV Contrast (73720) (IV Contrast Indications: Tumor Staging, Infection, Osteomyelitis)

CONTRAST



Imaging Healthcare SPECIALISTS

- 1 Oceanside**
3601 Vista Way, Bldg A, Ste 101
Oceanside, CA 92056
- 2 Encinitas**
477 N. El Camino Real
Bldg A, Ste 102
Encinitas, CA 92024
- 3 Poway**
12620 Monte Vista Road, Ste A
Poway, CA 92064
- 4 La Jolla**
4150 Regents Park Row, Ste 195
La Jolla, CA 92037
- 5 Kearny Mesa**
(MRI Services Only)
3939 Ruffin Road, Ste 102
San Diego, CA 92123
- 6 San Diego**
6386 Alvarado Court, Ste 121
San Diego, CA 92120
- 7 Hillcrest**
150 W. Washington Street
San Diego, CA 92103
- 8 Logan Heights**
(X-ray/Ultrasound Only)
1809 National Avenue, Ste 2104
San Diego, CA 92113
- 9 National City**
(MRI/Mammography/Ultrasound Only)
2427 Transportation Avenue
National City, CA 91950
- 10 Chula Vista**
333 H Street, Ste 1095
Chula Vista, CA 91910



Phone: 858-658-6500
Espanol: 858-658-6400

[ImagingHealthcare.com](https://www.imaginghealthcare.com)



QUESTIONS?

Visit our website [imaginghealthcare.com](https://www.imaginghealthcare.com) or
email us info@imaginghealthcare.com, today for more information